



# JANUARY 2012 NEWSLETTER

## January Texas Scramble

Another successful Texas Scramble was held on the 8<sup>th</sup> of January and was enjoyed by all who took part, with the prize winners being as follows:



**1st** Joe Armour, Gary Tully, Mark Armour & Len Ainsley Score **47.6 net**

**2nd** Rab Patterson, Bill Davies, Stuart MacFarlane & Julie Fraser Score **48.1 net**

**3rd** Ian Shanks; Peter Cowan, Jim Harwood & Maureen Shanks Score **49.8 net**

**4th** Ken Maclean, Anne McLure, Lee McBride & Tom Greig Score **52.4 net**

Thanks are due to Maureen Shanks and Julie Fraser for organising the event and to Anne McClure, Liz McDonagh & Alan Hastie for invaluable help on the day. Thanks are also due to Revie Thomson for sponsoring the 'nearest the pin at the 18<sup>th</sup> hole' team prize of 4 bottles of wine.

## The Solution to Looking After your Lawn!

We do not make a habit of giving free advertising in the Newsletter. However the following information came in from one of WLGC's suppliers and since it claims to solve your lawn cutting problems, allowing you to play more golf, we thought it worth passing on. The company concerned is The Turf Shop and it supplies Tiger Turf artificial lawns. Check it out on their website [www.theturfshop.co.uk](http://www.theturfshop.co.uk) and if of interest, contact Peter Campbell on 01506 844471 to arrange a free site visit and quotation, with a 5% discount being available to WLGC members.



## Men's Competitions

It is only a couple of months to the start of the competition season and the following gives advance notice that there is a major change this year to three of the men's singles match play competitions – the Melville Bowl, the Hunt Cup and the John Laing. Previously entry to the match play part of these competitions was via a stroke play qualifying round, with the leading 32 players entering the match play stage. This year however there will be no stroke play qualifying round and all players who enter these competitions will go straight into a draw for the first round of match play. An entry form for these competitions will be provided with the fixture list and once the draw has been made each two players drawn together will be responsible for fixing dates and times for their matches within the date span specified for the first round. A note on the format of the match play stage of these competitions follows:



**Melville Bowl** The player with the higher handicap is awarded half the difference in the two handicaps **as holes won** at the start of the match. For example, if player A's handicap is 6 and player B's handicap is 18, player B is 6 holes up at the start of the match. Each player then plays off scratch in match play format until one of them wins the match.

## Hunt Cup and John Laing

This is played in a standard match play format, with each player taking strokes, when available according to their handicap, at each hole, the player with the lower net score winning the hole. For members unfamiliar with the match play format an explanation of this is as follows:



In match play golfers are allowed strokes at particular holes according to a) their handicap and b) the standard scratch rating of the hole. Standard scratch rating relates to the perceived difficulty the hole, standard scratch 1 being the most difficult and standard scratch 18 being the easiest. The standard scratch for each hole is shown on the score card and may be different for the medal, ladies and yellow tees. In simple terms, if you play off 6 you get one stroke at standard scratch holes 1 to 6; If you play off 16 you get one stroke at standard scratch holes 1 to 16; if you play off 24 you get one stroke at each hole plus an additional one stroke at standard scratch holes 1 to 6.

Further men's competitions which may be entered at the start of the competition season are as follows:

**Eclectic score** This refers to recording a golfer's best scratch score or net score for each hole in all WLGC stroke play competitions he plays in during the season. The golfer with the lowest scratch eclectic score wins the scratch prize and the golfer with the lowest net eclectic score wins the handicap prize.

**Order of Merit Prize** Points are awarded to the top 10 players in each stroke play competition who have entered for the order of merit prize. Points awarded are as follows: 1<sup>st</sup> 14; 2<sup>nd</sup> 12; 3<sup>rd</sup> 10; 4<sup>th</sup> 8; 5<sup>th</sup> 6; 6<sup>th</sup> 5; 7<sup>th</sup> 4; 8<sup>th</sup> 3; 9<sup>th</sup> 2; 10<sup>th</sup> 1. Points are shared where ties on the same score occur. The golfer with the highest number of points at the end of the season wins the Order of merit prize.

## Latest revision of the Rules of Golf

The latest edition of the Rules of Golf has just been issued. However it is reckoned that the number of rules that affect club golfers from week to week is fairly small, the main ones being a) when and how you can take a free drop and b) when and how you can take a penalty drop. It is obviously important that you and your playing partners interpret these rules correctly. The following are some examples and even if you feel you know the rules already it will be worth checking 'just in case'.

**Rule 24-2 Immovable obstruction - Staked Tree** You can have a free drop if your ball is near a staked tree and you cannot swing at the ball in the line you wish to take without striking a part of the tree. Most club golfers appear to think that in this situation you take a free drop within one club length from where the ball lies, no nearer the hole. This is incorrect and in some situations means that the golfer may not be taking the best relief from the situation. Correctly you have to find the 'nearest point of relief' - the nearest spot at which you can swing the club in the line you want to take for your next shot without hitting any part of the tree. You then mark this spot and drop your ball within one club length from it, no nearer the hole. NB A tree with just a protective plastic sleeve around its trunk does not count as a staked tree.

**Rule 24-2 Immovable obstruction - Sprinkler Head** Many golfers think they can take a free drop if a sprinkler head is between their ball and the hole, which is incorrect. An example of this occurred some years ago in an inter club match between WLGC and Uphall GC at Uphall but had an unfortunate ending for WLGC. In one match at the 4<sup>th</sup> hole there was a sprinkler head 6" or so in front of the Uphall team's ball in line with the flag. The Uphall player due to play claimed a free drop and the WLGC team correctly disagreed. The Uphall player reluctantly played the ball as it lay and promptly chipped it straight into the hole!

So when can you take relief from a sprinkler head? Only if a) if your ball lies on or touches the sprinkler head b) if your ball is so close you would strike the sprinkler head with your club when completing your stroke and c) if the sprinkler head interferes with your stance.

**Rule 28 Penalty Drop for an Unplayable Lie** An unplayable lie can occur anywhere on the course but at West Lothian it is mainly required when a player hits his ball into trees. So you drive into trees, find your ball but it is unplayable. So what are your options under a one stroke penalty? a) Play your next shot from as near as possible to the spot from where you last played

b) Take a drop within two club lengths from where your

ball lies, no nearer the hole.

c) Drop a ball behind the point where your ball lay, going back as far as required, **but keeping a straight line between where you drop the ball, its original position and the hole (flag stick)**. There are not in fact that many situations when you can take this option, since going straight back correctly can take you further into the trees or even off the course. It is an option worth considering however in certain situations. The main thing to stress is that you **must** keep a straight line between where you drop the ball, its original position and the flag stick. This may mean getting one of your playing partners to give you a line to the hole if you cannot see it from the position you want to drop the ball. NB The above options also apply if you are taking an unplayable lie in a bunker but drops b) and c) **have** to be taken in the bunker. If you are unsure of the interpretation of any rules of golf in particular situations we have an expert on hand in our Professional Alan Reid.

### What a Deal! And Enjoy a Meal

You will have seen the leaflet Alan Gibson sent out with details of the fantastic meals deal competition whereby if you dine in the main lounge on a Sunday, 4pm to 7.30pm, choosing a three course dinner from the wide ranging menu, you enter a draw for: First prize - £500 of Holiday Vouchers from WLGC sponsor Thomson Holidays, Livingston; Second prize - An overnight stay in a romantic Scottish hotel!

The more you dine the more chances you have of winning a prize, the final Sunday for this competition being the 4<sup>th</sup> of March, with the draw being made at 7pm that evening. So reserve your table now on 01506 826049.

However the chance of winning a prize is only one incentive for dining in the WLGC clubhouse. There are many others: the superb food, excellent wine, good service, value for money prices and of course the wonderful views from the windows. See some pictures below from last Sunday to whet your appetite.

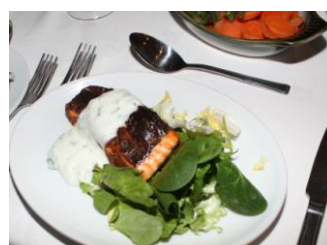


Regular diners Julia & Alan Grant. Julia won six lessons with Alan Reid in the last meals draw.

Excellent white & red wines are available.

On right Bill & Helen Watson, with friends from North Yorkshire, Drew & Petra Wright.

May Gilmour, guest of Jim & Lyn Brown.



Whitebait, pate and soup, three of the starters on the menu.

Superb steak and ale pie, with lots of vegetables served with it.

Delicious salmon, again served with lots of vegetables

Apple crumble and profiteroles, two of the very tasty sweets on the menu.